

Perfection in every detail

MULTI/JOINT® 3000 Plus

- Clamp ring**
ductile cast iron GGG45
EN-GJS 450-10 with
Resicoat® epoxy powder
coating type RT 9000 R4
- Varioseal**
rubber gasket
(EPDM or NBR)
- Uni/Fiks ring**
stainless steel
A4 (AISI 316)
- Bolts**
stainless steel A2
(AISI 304) PTFE coated
or stainless steel A4
(AISI 316) PTFE coated

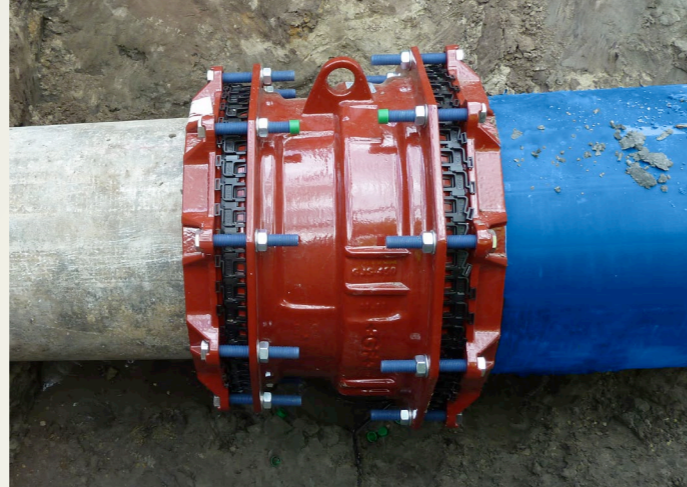


- Nuts**
stainless steel A2 (AISI 304)
galvanised and passivated or
stainless steel A4 (AISI 314)
galvanised and passivated
- Body**
ductile cast iron
EN-GJS, GGG45, -450-10
Resicoat® epoxy powder
coating type RT 9000 R4
- Washer**
stainless steel A2 (AISI
304) or stainless steel
A4 (AISI 316)



Hygiene protection
ensures the fitting stays clean
from production to point of use

cap in picture: DN50 - DN400



MULTI/JOINT® 3000 Plus

Specifications:

- May be used on all pipe materials
- Clamp ring: Ductile cast iron GGG45 in accordance with EN-GJS-450-10
- Coating: Resicoat® epoxy powder coating. Minimum layer thickness 250 micron in accordance with the GSK-register
- Bolts and nuts: Stainless steel A2 (AISI 316) or stainless steel A4 (AISI 316) Bolts are PTFE coated, nuts are galvanised and passivated to prevent galling
- Nominal angularity: max +8° (flange adaptor), max +16° (coupling)
- Working temperature: -5°C to +50°C
- Working pressure (PFA): Non restraint - 25 bar water / 8 bar gas
Restraint - 16 bar water / 8 bar gas
- Reusable
- Applications: above and below ground
- All couplings delivered hygienically packed
- Flanges DN350-DN600 PN10 / PN16 drilled
- Certificates: EN 14525, WRAS



Georg Fischer Sales Limited
Tel. 024 7653 5535 uk.ps@georgfischer.com
© Georg Fischer, 2018
Printed in UK

www.gfps.com/uk

GF Piping Systems



The connection for all pipe diameters
Restraint - non restraint
DN50 - DN600

MULTI/JOINT® 3000 Plus



Competent customer service

Maintenance and repair

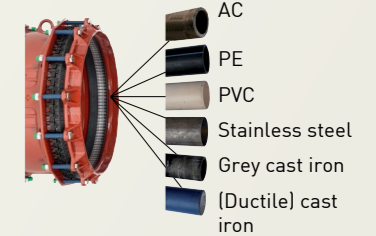
Georg Fischer Waga N.V. is the connection technology specialist, offering a complete range of products that have been used in the water and gas market for already many years. No matter how complicated your connection problem seems, we offer you a solution when it comes to connecting, repairing, tapping and additional spare parts.

We have what you need wherever you are: tailor-made solutions, wide range couplings, competent customer support worldwide, fast delivery by local availability, complete packages, know-how and know-why applications. We guarantee a safe and reliable connection between different pipe materials and pipe dimensions even under the most severe circumstances.

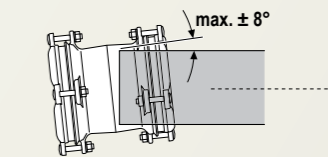
Sealing system



Suitable for all pipe materials



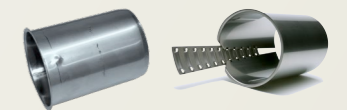
Nominal angularity*



* based on the middle of the range

Insert stiffener

In case of connecting PE or PVC pipes, install an insert stiffener.



Lubo Bolts
Remove nuts even on the most damaged bolts.

MULTI/JOINT® 3007 Plus - Coupling Restraint



dim. (DN)	Range (mm)	EPDM/A2 GF Code
50	46-71	709305610
65	63-90	709305612
80	84-105	709305614
100	104-132	709305616
125	132-155	709305618
150	154-192	709305620
200	192-232	709305624
225	230-268	709305626
250	267-310	709305628
300	315-356	709305632
350	352-393	709305636
400	392-433	709305640
425	432-464	709305642
450	450-482	709305672
475	481-513	709305673
500	500-532	709305674
550	548-580	709305676
600	605-637	709305678

MULTI/JOINT® 3107 Plus - Reduced Coupler Restraint



dim. (DN)	Range (mm)	EPDM/A2 GF Code	dim. (DN)	Range (mm)	EPDM/A2 GF Code
65 x 50	63 - 90 46 - 71	709405618	400 x 350	392 - 433 352 - 393	709405690
80 x 65	84 - 105 63 - 90	709405620	425 x 400	432 - 464 392 - 433	709405693
100 x 80	104 - 132 84 - 105	709405624	450 x 400	450 - 482 392 - 433	709405692
125 x 100	132 - 155 104 - 132	709405632	475 x 425	481 - 513 432 - 464	709405695
150 x 100	154 - 192 104 - 132	709405636	500 x 450	500 - 532 450 - 482	709405694
150 x 125	154 - 192 132 - 155	709405638	550 x 500	548 - 580 500 - 532	709405696
200 x 150	192 - 232 154 - 192	709405648	600 x 550	605 - 637 548 - 580	709405697
225 x 200	230 - 268 192 - 232	709405678			
250 x 225	267 - 310 230 - 268	709405682			
300 x 250	315 - 356 267 - 310	709405686			
400 x 300	392 - 433 315 - 356	709405689			

MULTI/JOINT® 3057 Plus - Flange Adaptor Restraint



dim. (DN)	Range (mm)	Drilling Pattern	EPDM/A2 GF Code
50DN50	46-71	PN16	709355610
65DN65	63-90	PN16	709355612
80DN80	84-105	PN16	709355614
100DN100	104-132	PN16	709355616
125DN125	132-155	PN16	709355618
150DN150	154-192	PN16	709355620
200DN200	192-232	PN10	709355624
200DN200	192-232	PN16	709355625
250DN250	267-310	PN10	709355628
250DN250	267-310	PN16	709355629
300DN300	315-356	PN10	709355632
300DN300	315-356	PN16	709355633
350DN350	352-393	PN10	709355636
350DN350	352-393	PN16	709355637
400DN400	392-433	PN10	709355638
400DN400	393-433	PN16	709355639
500DN500	500-532	PN10/16	709355674
550DN550	548-580	PN10/16	709355676
600DN600	605-637	PN10/16	709355678

MULTI/JOINT® 3407 Plus - Bend Restraint



dim. (DN)	Range (mm)	EPDM/A2 GF Code
80	84-105	709475614
100	104-132	709475616
150	154-192	709475620

MULTI/JOINT® 3157 Plus - Reduced Flange Adaptor Restraint



dim. (DN)	Range (mm)	Drilling Pattern	EPDM/A2 GF Code
50DN40	46-71	PN16	709455608
65DN80	63-90	PN16	709455618
100DN80	104-132	PN16	709455624
125DN100	132-155	PN16	709455632
125DN150	132-155	PN16	709455638
150DN100	154-192	PN16	709455636
200DN150	192-232	PN16	709455639
225DN200	230-268	PN16	709455679
225DN250	230-268	PN16	709455681
300DN250	315-356	PN10	709455686
300DN250	315-356	PN16	709455687
350DN300	352-393	PN10	709455684
350DN300	352-393	PN16	709455685
425DN400	432-464	PN10/16	709455688
450DN400	450-482	PN10/16	709455692
475DN400	481-513	PN10/16	709455690

MULTI/JOINT® 3557 Plus - Reduced Duckfoot Restraint



dim. (DN)	Range (mm)	Drilling Pattern	EPDM/A2 GF Code
50-80	46-72	PN16	709495618
65-80	63-90	PN10	709495636
65-80	63-90	PN16	709495630
100-80	104-132	PN16	709495623
125-80	132-155	PN10	709495661
125-80	132-155	PN16	709495648
150-80	154-192	PN10	709495673
150-80	154-192	PN16	709495667

MULTI/JOINT® 3207 Plus - End Cap threaded Restraint



dim. (DN)	Range (mm)	Rp inch	EPDM/A2 GF Code
50	46-71	3/4"	709385604
65	63-90	3/4"	709385609
65	63-90	1"	709385610
80	84-105	3/4"	709385614
100	104-132	3/4"	709385619
125	132-155	3/4"	709385624
150	154-192	3/4"	709385629
200	192-232	3/4"	709385634
225	230-268	3/4"	709385649
250	267-310	3/4"	709385639
300	315-356	3/4"	709385644
400	392-433	3/4"	709385654
50	46-71	2"	709385608
65	63-90	2"	709385613
80	84-105	2"	709385618
100	104-132	2"	709385623
125	132-155	2"	709385628
150	154-192	2"	709385633
200	192-232	2"	709385638
225	230-268	2"	709385653
250	267-310	2"	709385643
300	315-356	2"	709385648
400	392-433	2"	709385658

+ Other dimensions available.

MULTI/JOINT® 3207 Plus - End Cap Restraint



dim. (DN)	Range (mm)	EPDM/A2 GF Code
50	46-71	709375610
65	63-90	709375612
80	84-105	709375614
100	104-132	709375616
125	132-155	709375618
150	154-192	709375620
200	192-232	709375624
225	230-268	709375626
250	267-310	709375628
300	315-356	709375632
400	392-433	709375634

+ Full catalogue available at www.gfps.com/uk

Insert Stiffener Economy

In case of connecting PE or PVC pipes, install an insert stiffener



Insert Stiffener Economy without wedge



Insert Stiffener with wedge

d x e	SDR	GF Code	GF Code
50 x 4.6	SDR 11	709026203	-
50 x 2.9	SDR 17.6/17	709026206	-
63 x 5.8	SDR 11	709026211	-
63 x 3.6	SDR 17.6/17	709026214	-
75 x 6.8	SDR 11	709026220	-
75 x 4.3	SDR 17.6/17	709026223	-
90 x 8.2	SDR 11	709026230	-
90 x 5.2	SDR 17.6/17	709026233	-
110 x 10	SDR 11	709026242	-
110 x 6.3	SDR 17.6/17	709026245	-
125 x 11	SDR 11	709026254	-
125 x 7.2	SDR 17.6/17	709026257	-
140 x 13	SDR 11	709026266	-
140 x 8	SDR 17.6/17	709026269	-
160 x 15	SDR 11	709026278	-
160 x 9.1	SDR 17.6/17	709026281	-
180 x 16	SDR 11	709026290	-
180 x 11	SDR 17	709026408	-
180 x 10	SDR 17.6	709026293	-
200 x 18	SDR 11	709026302	-
200 x 12	SDR 17	709026409	-
200 x 11	SDR 17.6	709026305	-
225 x 21	SDR 11	709026314	-
225 x 13	SDR 17	709026410	-
225 x 13	SDR 17.6	709026317	-
250 x 23	SDR 11	709026326	-
250 x 15	SDR 17	709026411	-
250 x 14	SDR 17.6	709026329	-
280 x 26	SDR 11	709026338	-
280 x 17	SDR 17	709026340	-
280 x 16	SDR 17.6	709026341	-
315 x 29	SDR 11	709026350	-
315 x 19	SDR 17	709026413	-
315 x 18	SDR 17.6	709026353	-
355 x 32	SDR 11	709026362	-
355 x 21	SDR 17	709026414	-
355 x 20	SDR 17.6	709026365	-
400 x 36	SDR 11	-	709026138
400 x 23	SDR 17.6	-	709026139
450 x 41	SDR 11	-	709026148
450 x 26	SDR 17.6	-	709026149
500 x 46	SDR 11	-	709026158
500 x 28	SDR 17.6	-	709026159
560 x 51	SDR 11	-	709026168
560 x 32	SDR 17.6	-	709026169
630 x 57	SDR 11	-	709026178
630 x 36	SDR 17.6	-	709026179

+ Other dimensions available.