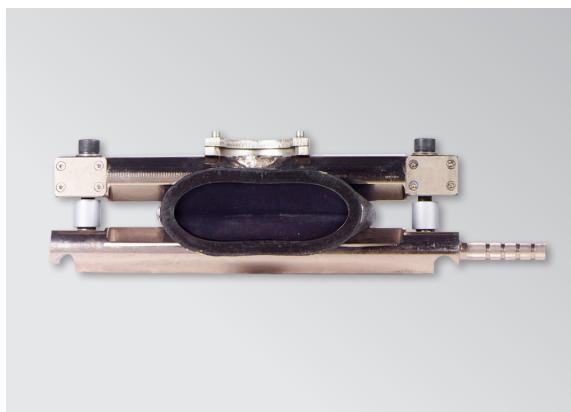




SQUEEZE OFF TOOLS

Hydraulic Squeeze Tool 250mm

A lightweight A-Frame style emergency squeeze off tool suitable for PE and HDPE pipes. The single cylinder and frame can be used to make multiple squeeze offs with additional beam sets.



FEATURES

- Designed to meet standard: GIS PL2-7:2013
- Lightweight tool with compact fold away legs
- The modular formed tool separates into easy to handle parts.
- Two stage hydraulic hand pump for speed and power or air intensifier option available
- Tough nitrocarburised cylinder piston rod
- Quick release hydraulic connection
- Lifting eye and handles

Range

- Pipe diameter range: Ø160mm – 250mm
- Pipe thickness range: SDR 11 - 26

SQUEEZE OFF TOOLS

Hydraulic Squeeze Tool 250mm

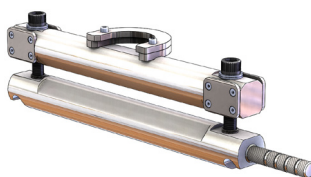
Code	Description
02-31-750	Squeeze tool 160-250 X4, 1 set of detachable closure bars, 1 set of buffer stops
02-31-751	Extra set of pipe closure bars only with lock screws for 160-250 X4 squeeze tool
02-31-752	Set of lock screws for 160-250 X4 squeeze tool (2 pcs)
02-31-753	Spare hydraulic cylinder with hydraulic couplings for 160-250 X4 squeeze tool
02-31-754	Spare hydraulic pump with hydraulic couplings for 160-250 X4 squeeze tool
02-31-755	Air over hydraulic intensifier unit for 160-250 X4 squeeze tool 110v
02-31-756	Air over hydraulic intensifier unit for 160-250 X4 squeeze tool 230v
02-31-760	Safety stops for 160-250 X4 squeeze tool 160mm SDR11 (2pcs)
02-31-761	Safety stops for 160-250 X4 squeeze tool 180mm x SDR11 (2pcs)
02-31-762	Safety stops for 160-250 X4 squeeze tool 200mm x SDR11 (2 pcs)
02-31-763	Safety stops for 160-250 X4 squeeze tool 225mm x SDR11 (2 pcs)
02-31-764	Safety stops for 160-250 X4 squeeze tool 250mm x SDR11 (2 pcs)
02-31-765	Safety stops for 160-250 X4 squeeze tool 160mm x SDR17 (2 pcs)
02-31-766	Safety stops for 160-250 X4 squeeze tool 180mm x SDR17 (2 pcs)
02-31-767	Safety stops for 160-250 X4 squeeze tool 200mm x SDR17 (2 pcs)
02-31-768	Safety stops for 160-250 X4 squeeze tool 225mm x SDR17 (2 pcs)
02-31-769	Safety stops for 160-250 X4 squeeze tool 250mm x SDR17 (2 pcs)
02-31-770	Safety stops for 160-250 X4 squeeze tool 160mm x SDR21 (2 pcs)
02-31-771	Safety stops for 160-250 X4 squeeze tool 180mm x SDR21 (2 pcs)
02-31-772	Safety stops for 160-250 X4 squeeze tool 200mm x SDR21 (2 pcs)
02-31-773	Safety stops for 160-250 X4 squeeze tool 225mm x SDR21 (2 pcs)
02-31-774	Safety stops for 160-250 X4 squeeze tool 250mm x SDR21 (2 pcs)



Basic squeeze tool kit without pump or stops



Cylinder assembly



Beam set assembly



End stop (2 required per beam set)



Ratchet driver, extension bar and driver bit



Hand pump assembly (hose not shown)



Air intensifier assembly (hose not shown)

Fusion Equipment Limited

Smeckley Wood Close, Chesterfield Trading Estate,
Chesterfield, Derbyshire S41 9PZ, UK

T: +44 (0)1246 264400 | E: sales@fusionequipment.co.uk



**Fusion
Equipment**