


Mains Clamp 200mm

Operating Instructions

REVISION: 01



Helping you make the right connections.

© **Copyright Caldervale Technology Ltd.**

The copyright for this product and instruction manual is held by Caldervale Technology Ltd. Any technical specifications, or illustrations part of this manual cannot be reproduced, used illicitly or distributed in any form for competitive purposes.

Contents	Page
01. Introduction	02
02. Safety Instructions	03
03. Reduction Liners	04
04. Accessories	05
05. Bases	06
06. Operation	07
07. Specifications	09
08. Parts Diagram	10
09. Warranty Information	11
10. Certificate of Calibration	13
11. Service and Repair	13
12. Decommissioning and Disposal	13

01. Introduction

General Description

The pipe positioning tool is designed to restrain the movement of couplers, elbows and reducers (new, weathered or previously installed) they are designed to fit pipes of sizes up to 200mm and hold pipe steady for welding.

This unit is design and manufactured to meet the requirements of National Grid Gas Industry Standards GIS/PL2-5 Part 5: Electrofusion and Ancillary Tooling.

The clamps have interchangeable shells allowing quick and easy access for any size coupler or reducer.

It may be possible for there to be custom made sizes of pipe liners that may be specific to your line of work where necessary.



Important!

It is important to ensure all component parts are present and in serviceable condition.

This tool should be used in accordance with the pipe manufacturers' recommendations and in line with local codes of practice.

This manual outlines the operation of the pipe positioning tool and forms a part of the product to which it relates. It should be kept for the life of the product. Any amendments issued by Caldervale Technology Ltd should be incorporated in the text. The manual should be passed to any subsequent holder or user of this product.

02. Safety Instructions

1. Read the whole booklet and understand the operating instructions before using the tool.
2. It is imperative that all possible precautions are made to avoid unexpected movement of the tool and pipe during use.
3. Never attempt to operate on pipes that are not within the specified dimensions
4. Operatives should wear eye protection, gloves, safety headwear and footwear when using the equipment.

03. Reduction Liners

Reduction liners allow the clamping tool to be used on multiple sizes of pipe rather than just one size, allowing for more flexibility and correct clamping of many sizes.

Below is a list of our most commonly requested reduction liners; other sizes are available upon request:

Product Code	Description
01-15-006	125mm to 63mm (4 pcs)
01-15-016	125mm to 75mm (4 pcs)
01-15-005	125mm to 90mm (4 pcs)
01-15-009	180mm to 110mm (4 pcs)
01-15-004	180mm to 125mm (4 pcs)
01-15-008	180mm to 140mm (4 pcs)
01-15-007	180mm to 160mm (4 pcs)
01-15-110	200mm to 180mm (4 pcs)



Reduction Liners Set

04. Accessories

The 200mm mains clamp is a versatile piece of equipment and with some accessories it can be used for a number of different applications.

Below is a list of available parts and accessories:

Product Code	Description
01-15-101	Mains clamp 2 x 200mm rings and straight base
01-15-102	Mains clamp 2 x 200mm rings and angle maker base
01-15-103	Mains clamp 3 x 200mm rings plus 3-way adapter
01-15-104	Mains clamp 1 x 200mm ring only
01-15-106	Mains clamp 4 x 200mm rings and straight base
01-15-107	Mains clamp 4 x 200mm rings and angle maker base
01-15-108	Mains restraining clamp 6 x 200mm rings 3-way
01-15-110	Mains restraining clamp liner set 200-180mm (4 pcs)



**3 Rings 3-Way Clamping
01-15-103**

05. Bases

Bases are the square shafts that allow the clamps to be aligned with each other or to allow angles to be made and hold the pipes at the specified angles.

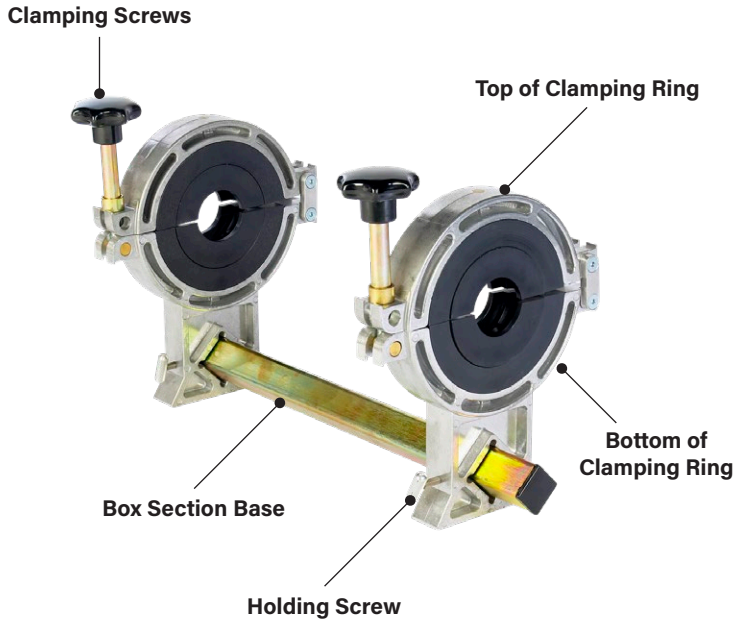
Below is a list of bases available for this clamping system:

Product Code	Description
01-15-029	Mains clamp straight base only 600mm
01-15-068	Mains clamp straight base only 750mm
01-15-069	Mains clamp straight base only 1100mm
01-15-070	Mains clamp straight base only 1500mm



2 Rings Straight Base
01-15-101

06. Operation



Instructions for use

1. Check the pipe size and set the shells to suit. Turn the clamping screws anti-clockwise to release them and allow the top half of the clamping rings to be removed. Remove any shells already present by unscrewing the fixing bolt, and fit the correct size shell for the pipe being used.
2. Prepare the pipes to be joined using accepted procedures.
3. The clamping rings can be moved closer and further away from each other by loosening the holding screw which releases the clamping pressure on the box section base. The rings can now be moved or removed from the base.

4. If elbows or tees are being held, then the holding screw can be released enough to allow the clamping ring to slide along the box section base the angle making joint piece can be set to the appropriate angle or the tee piece adapter box section can be fitted in place by locating the unit on the box section base.
5. If Tees are being held, then the electrofusion side should be held and welded first, then the spigot outlet held and welded second. If the spigot is long enough, the tool can be used as a straight clamp. If there is not enough room, adjust the tool to a 90degree angle and clamp between the main pipe and the side pipe.
6. The fitting is now constrained and ready for welding.

Removal

1. On completion of the jointing and cooling cycle, the clamp may be removed by releasing the pillar nut/hand wheel assemblies, opening the clamp rings and lifting free.



Storage

IMPORTANT! When not in use always:

1. Store the tool in the carry case provided.
2. Ensure the tool is clean and dry before storage.

07. Specifications

Materials:	Mild Steel EN1A, Mild Steel EN3A, Stainless Steel, Brass, Aluminium
Finish:	Anodised (Aluminium) / Zinc passivate to mild steel parts
Pipe Range:	Up to 200mm max

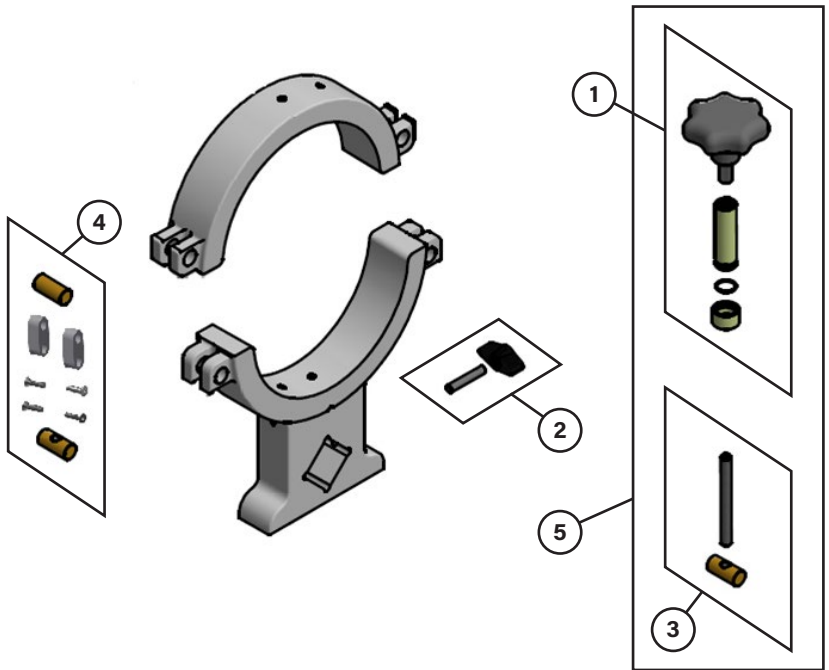
Product Code	Dimensions	Weight
01-15-101	60mm x 30mm x 15mm	10kg
01-15-102	60mm x 30mm x 15mm	12.6kg
01-15-103	90mm x 50mm x 15mm	20.4kg

This unit is design and manufactured to meet the requirements of National Grid Gas Industry Standards GIS/PL2-5 Part 5: Electrofusion and Ancillary Tooling.

Caldervale Technology Ltd has a policy of continuous improvement in product quality and design. Caldervale Technology Ltd therefore reserves the right to change the specification of its models at any time, without prior notice.

It is the responsibility of the operator to ensure that the PE pipe is suitable for squeeze off application if in doubt contact the PE pipe manufacturer for confirmation.

08. Parts Diagram



Part	Product Code	Description
1	01-15-065	Mains Clamp (200mm) Clamping Handle
2	01-15-064	Mains Clamp (200mm) Base Locking Wingnut
3	01-15-067	Mains Clamp (200mm) Clamping Thread and Toggle
4	01-15-063	Mains Clamp (200mm) Hinge repair kit
5	01-15-066	Mains Clamp (200mm) Clamping Handle C/W Thread and Toggle

09. Warranty Information

1. Extent of Warranty

- a) Subject to clauses 2 and 3, Caldervale Technology Ltd warrants to the end-user customer that its products will be free from defects in materials and workmanship, for six months after the date of purchase by the end-user customer, subject to providing proof of purchase.
- b) If Caldervale Technology Ltd receives, during the warranty period, notice of a defect in product which is covered by this warranty; Caldervale Technology Ltd shall either repair or replace the product, at its option. Any replacement product may be either new or like-new, provided that it has functionality at least equal to that of the product being replaced.
- c) All warranty work will be carried out by Caldervale Technology Ltd unless otherwise agreed. On-site warranty and repair or replacement services are available from authorised Caldervale Technology Ltd service facilities world-wide.
- d) Customers shall prepay shipping charges for products returned to Caldervale Technology Ltd for warranty service, and Caldervale Technology Ltd will charge for return of the products back to the customer.
- e) This warranty statement gives the customer specific legal rights. The customer may also have other rights which vary from country to country in the world.

2. Pre-conditions for Warranty Application

Caldervale Technology Ltd's warranty covers only those defects which arise as a result of normal use of the product, and this warranty shall only apply in the following circumstances:

- a) All the instructions contained in the operating manual have been complied with; and
- b) None of the following apply:
 - i) Improper or inadequate maintenance;
 - ii) Physical abuse;
 - iii) Unauthorised modification, misuse or any use not in accordance with the operating manual and good industry practice;

- iv) Operation outside the products specifications;
- v) Improper site preparation or maintenance;
- vi) Faulty pipes.

3. Limitations of Warranty

- a) Caldervale Technology Ltd does not warrant the operation of any product to be uninterrupted or error free.
- b) Caldervale Technology Ltd makes no other warranty of any kind, whether express or implied, with respect to its products. Caldervale Technology Ltd specifically disclaims the implied warranties of satisfactory quality and fitness for a particular purpose.
- c) To the extent that this warranty statement is inconsistent with the law of the locality where the customer uses the product, this warranty statement shall be deemed modified by the minimum necessary to be consistent with such local law.
- d) To the extent allowed by local law, the remedies provided in this warranty statement are the customer's sole and exclusive remedies.
- e) This tool has been designed for the range of pipes available at the time of its design and development. Caldervale Technology Ltd can accept NO liability for the unit's ability or otherwise to work with new or different pipes that subsequently appear in the market place.

Please complete this information and keep it safely with your proof of purchase receipt. You will require it for any warranty claim.

Where purchased: _____

Date of purchase: _____

Name of purchaser: _____

Address of purchaser: _____

Type of tool: _____

Serial number: _____

10. Certificate of Calibration

- This product has been inspected and tested in accordance with the ISO9001 quality control systems and procedures in place at Caldervale Technology Ltd, Dewsbury.
- This product has no calibration period, periodic, safety inspections should be carried out by the operator if in any doubt please contact the manufacturer for further information.

11. Service and Repair

For service and repair please contact:

INTERNATIONAL

Caldervale Technology Ltd

Bretfield Court, Dewsbury,
West Yorkshire WF12 9BG, UK

T. +44 (0)1924 469571

E. sales@caldertech.com

W. caldertech.com

AUSTRALIA / NZ

Caldertech Australia Pty Ltd

Unit 3/30 Juna Drive,
Malaga WA 6090, Australia

T. +61 (0)8 9209 1132

E. sales@caldertech.com.au

W. caldertech.com.au

12. Decommissioning and Disposal

These give the instructions for decommissioning and disposal of the equipment and confirm how it is to be taken out of service safely, in respect of the Essential Environmental, Health and Safety Requirements.

- If a Caldertech Mains Clamp has reached the end of its useful working life and cannot be refurbished it must be sent to a licensed recycling facility for treatment. That will ensure the waste hierarchy requirements are met.
- End of life treatment is the responsibility of the Customer. This can also be achieved by returning the product back to the manufacturer if required.

INTERNATIONAL

Caldervale Technology Ltd

Bretfield Court, Dewsbury,
West Yorkshire WF12 9BG, UK

T. +44 (0)1924 469571

E. sales@caldertech.com

W. caldertech.com

AUSTRALIA / NZ

Caldertech Australia Pty Ltd

Unit 3/30 Juna Drive,
Malaga WA 6090, Australia

T. +61 (0)8 9209 1132

E. sales@caldertech.com.au

W. caldertech.com.au



Caldertech
.com